

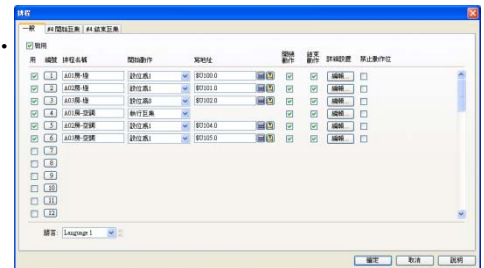
HMI Schedule



- The schedule function allows the HMI to perform a specified operation at the designated time. For Example, you can arrange the start/end time for equipment operation to lower the production cost and improve efficiency.
- Operator can use " schedule setting table" to modify pre-defined schedule.
- Each schedule can be programmed to either change the value of a specified PLC location or execute a specified macro at the designated time.

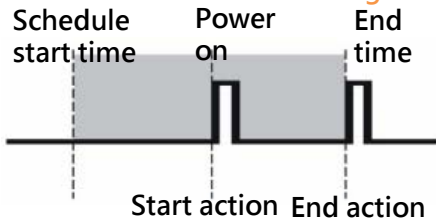
Function

- Up to 48 schedule can be registered in a panel application.
- Enable or disable power-on action or end action.
- Besides periodic schedule setup, you can make schedule valid only for the specified day.

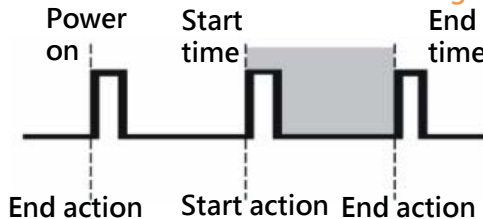


• Illustration :

Turned on inside schedule range



Turned on outside schedule range



Application

编号	名称	状态	设置	开始	结束	适用日
1	Motor A	■		00:00:00	23:00:00	—
2	Motor B	□		— 05:00:00	五 20:00:00	
3	Temp.A	■		09:00:00	17:00:00	一、二、三、四、五
4	Temp.B	■		— 09:00:00	四 18:00:00	
5	Max.Temp.	■		07:30:00	20:30:00	04/10
6	Safety Check	■		08:00:00	23:00:00	01/01

- Turn on/off machines on designated start/end time
- Building energy management system
- Temperature control system
- Auto power cut-off system
- Agriculture, livestock farming, auto feeder, etc.

Demo AP

The demo AP groups schedule by time and use schedule setting table to set up multiple schedules.

MT043 / MT056 / MT070 / MT080 / MT100 / MT104 / MT121 / MT150



Taipei World Trade Center
Tel : +886-2-27206601 (Rep.)
E-mail : webservice@maxthermo.com.tw

Taipei Headquarters
Tel : +886-2-22287950 (Rep.)

Thailand Company
Tel : +662-415-8318, +662-417-2548-49
E-mail : thaimax0001@yahoo.com