




Human Machine Interface



Features

1. Maxtech SCADA human-machine editing software allows you to easily make an editing plan and meet different operational requirements.
2. 3.5 inch to 4.3 inch HMI.
3. Simple planning process.
4. Intuitive design concept.
5. Numerous operation objects.
6. Greatly increase design efficiency.

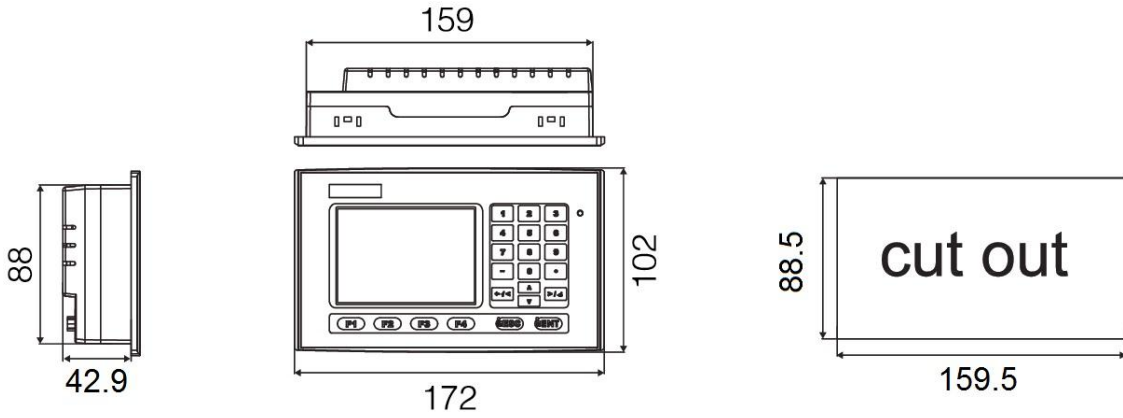
Standard Specification

Item	MT037-LSK MT037V-LSK	MT035-TST MT035-TNT	MT043-WST
Products			
Display Type	Monochrome STN LCD	TFT LCD	
Colors	16 gray levels	256 colors	65535 colors
Backlight	LED (50,000 hours)		LED (20,000 hours)
Display Brightness	-	350 cd/m ²	400 cd/m ²
Resolution	160×80	320×240	480×272
View Size	3.7"	3.5"	4.3"
Operation	Key type 22 keys, max. : 44 keys (Option)	Touch type	
Text Range	6x8 dot font~96x96 dot font / Windows internal font		
CPU	RISC 32 bit		RISC 32 bit / 2D graphic engine
Flash Memory	1MB (Standard) / 8MB (Option)		8MB
Battery Backup Memory	0KB / 1MB (Option)	128KB / 1MB (Option)	
System Working Memory	256KB	1024 KB	32MB
Serial Ports	COM1 : RS232/422/485 COM2 : RS422/485		COM1 : RS232/422/485 COM2 : RS232/485 or option COM3 : RS232
Ethernet Port	Option		
USB Ports	×		For HMI download use x1(M) For USB card use x 1(S)
Micro SD	×		Option
Audio	×		
Power Connector	DC20V~DC28V		

Power Consumption	6W		13W
Operating Temp.	0°~50°C (32°~120°F)		
Relative Humidity	10%~90%RH ; 0°~50°C, non-condensing		
Shock (Operation)	10 to 55Hz (X, Y, Z direction 1G 30 minutes)		
EMI	Complies with FCC part 15 class A		
CE	Complies with EN55022, EN61000-4-2, EN61000-4-3, EN61000-4-8		Complies with EN61000-6-2, EN61000-6-4
Front Panel	Meets NEMA4 / IP65		
Cooling	Natural cooling		
Dimensions (WxHxD) Unit : mm	172.0 x 102.0 x 42.9	130.0 x 106.2 x 39.0	130.0 x 106.0 x 39.0
Cutout Dimensions (WxH) Unit : mm	88.5 x 159.5	118.5 x 92.5	118.5 x 92.5
Net Weight	0.33 kg	0.27 kg	0.35 kg
Certifications	CE, FCC approved		

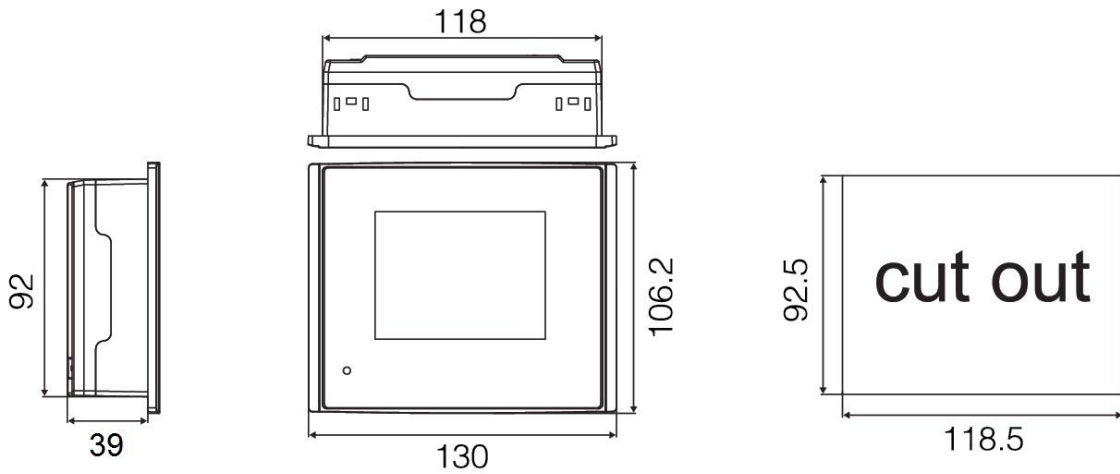
External Dimension

MT037-LSK / MT307V-LSK



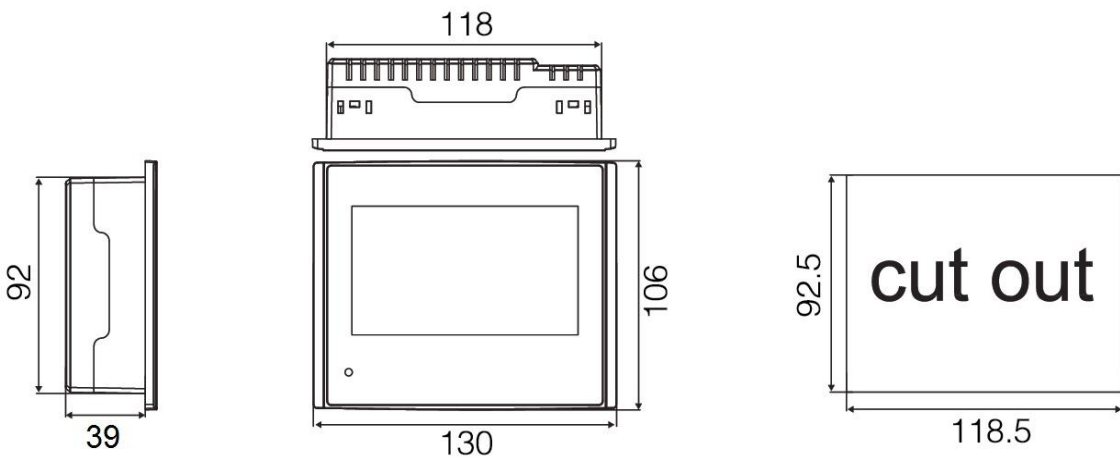
Unit: mm

MT035-TST / MT035-TNT



Unit: mm

MT043-WST



Unit: mm

Maxtech SCADA executes in HMI for monitoring

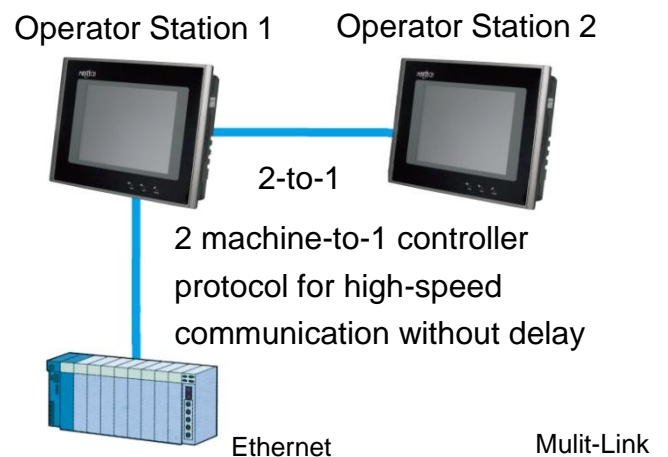
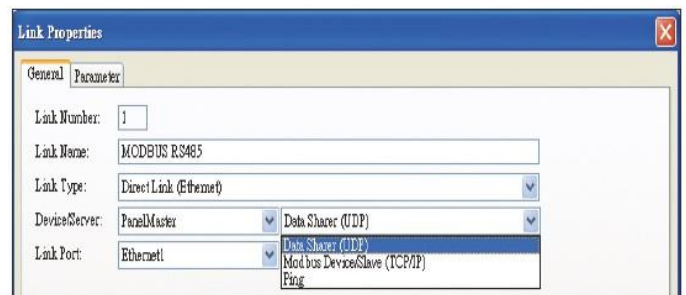
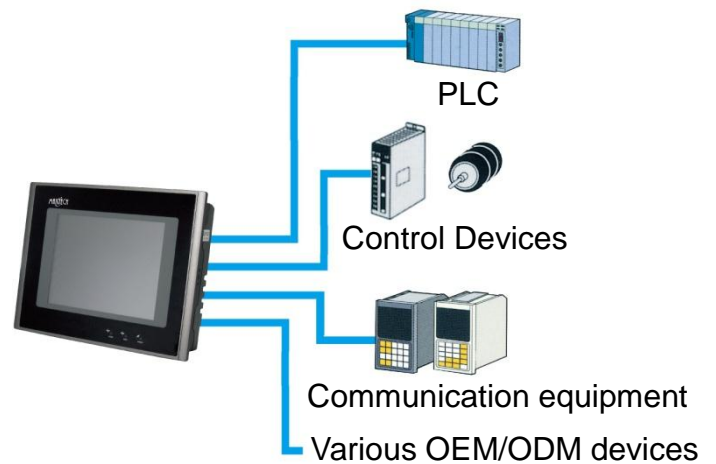
1. Maxtech SCADA software provides the strongest functions for programming engineers. (free of charge)
2. Software interface is available in traditional Chinese, Simply Chinese and English.
3. Free of charge for designing driver.



A variety of communication modes, offering customer freedom of choice, user-friendly products

Various forms of interface, serial communication RS232; RS422; RS485; Ethernet port, flexible with mixed connection mode, able to simultaneously conduct direct or indirect communication with multiple controllers.

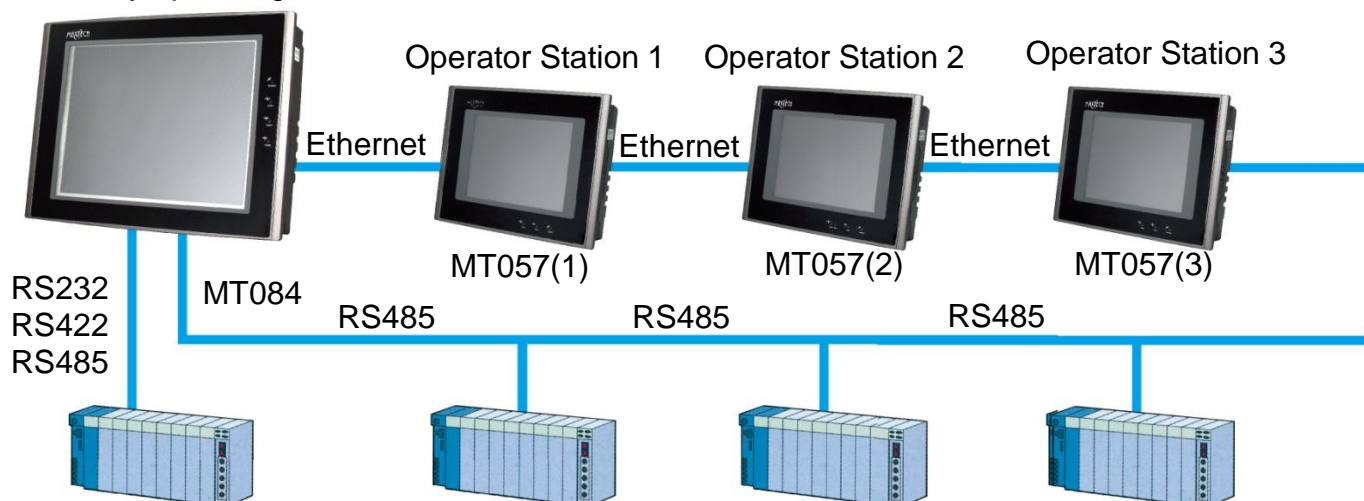
- (Serial 1:1), a human-machine with a controller or (serial 2:2) a human-machine with two different controllers in series
- (Serial port 1: n; Multi-drop) multiple human-machine (RS485) through a host human-machine with a master controller, for multiple-to-one communication.
- (Serial n: 1; Multi-link) multiple human-machine of a serial (RS485) with a controller.
- Specially developed two (human-machine) to one (controller) protocol, allowing faster communication; master and slave show different screens, can simultaneously switch and operate controller. Maxtech SCADA only needs simply setup for master and slave to share resources.
- (Ethernet port 1: n) human-machine of one network port (Ethernet) with multiple controllers.
- (Ethernet port 1:1) human-machine of one network port (Ethernet) with host PC, and a



controller in series; thus, host PC can conduct data sampling.

- Network port (Ethernet) data sharing mode
Data Sharer uses UDP protocol for connecting up to 16 MT product units for high-speed real-time data sharing.
- Through expansion module (Profibus DP bus, CANBus, etc.), connect to a variety of field bus network.

Primary operating station



Contact

Taipei World Trade Center

Add: 3C25, Taipei World Trade Center, No. 5, Sec. 5, Hsin Yi Rd. Taipei Taiwan, R.O.C.

Tel: 886-2-27206601 (Rep.)

Fax: 886-2-23455120

E-mail: gitta@ms9.hinet.net

<http://www.maxthermo.com>

Factory

Add: 11F., No.168, Jiankang Rd., Zhonghe Dist, New Taipei City 235, Taiwan (R.O.C.)

Tel: 886-2-22287950 (Rep.)

Fax: 886-2-22286140

Thailand Office - THAI MAXIMUM ELECTRONIC CO., LTD

Add: 86/132-133 m.7 Samaedum Bangkoontien Bangkok 10150 Thailand.

Tel: +662-415-8318 , +662-417-2548-49

Fax: +662-415-8798

<http://www.thaimaximum.com>