

Human Machine Interface



Features

1. Maxtech SCADA human-machine editing software allows you to easily make an editing plan and meet different operational requirements.
2. 5.6 inch to 5.7 inch HMI.
3. Simple planning process.
4. Intuitive design concept.
5. Numerous operation objects.
6. Greatly increase design efficiency.

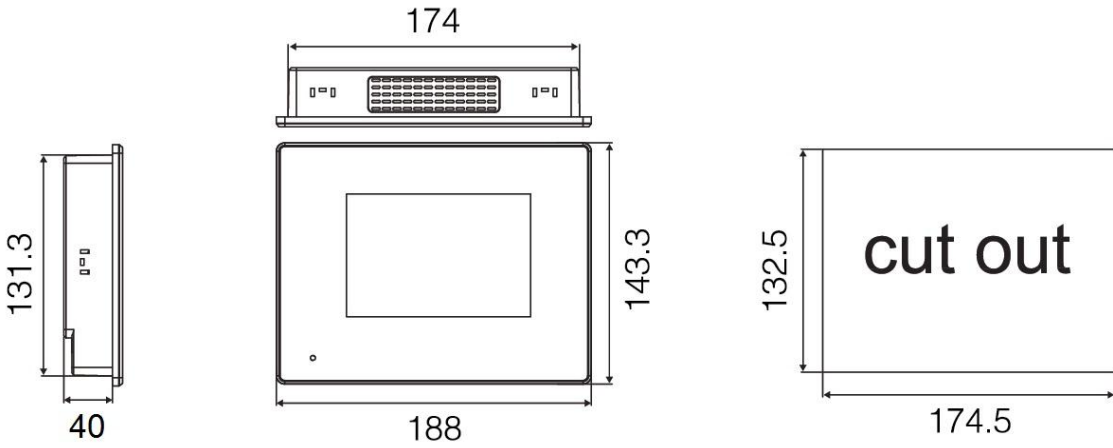
Standard Specification

Item	MT056-AST	MT057-BST MT057-BNT	MT058-TST MT058-TNT	MT057-BSK	MT057-TSK
Products					
Display Type	TFT LCD	Monochrome STN LCD	TFT LCD	Monochrome STN LCD	TFT LCD
Colors	65535 colors	16 gray levels	256 colors	16 gray levels	256 colors
Backlight	LED (20,000hours)	LED (50,000 hours)			
Display Brightness	200 cd/m ²	250 cd/ m ²	350 cd/ m ²	250 cd/ m ²	350 cd/ m ²
Resolution	320x234	320x240			
View Size	5.6"	5.7"			
Operation	Touch type			Key type 22 keys, max.: 44 keys (Option)	
Text Range	6x8 dot font~96x96 dot font / Windows internal font				
CPU	RISC 32 bit / 2D graphic engine	RISC 32 bit			
Flash Memory	8MB	4MB (Standard) / 8MB (Option)			
Battery Backup Memory	128KB / 1MB (Option)				
System Working Memory	32MB	1024KB			
Serial Ports	COM1:RS232 /422/485 COM2:RS232 /485 or option COM3:RS232	COM1/COM2:RS232/422/485			
Ethernet Port	Option				

USB Ports	For HMI download use x1(M) For USB card use x 1(S)	x	
Micro SD	Option	x	
Audio	x		
Power Connector	DC20V~DC28V		
Power Consumption	13W	10W	8W
Operating Temp.	0°~50°C (32°~120°F)		
Relative Humidity	10%~90%RH ; 0°~50°C, non-condensing		
Shock (Operation)	10 to 55Hz (X, Y, Z direction 1G 30 minutes)	10 to 55Hz (X, Y, Z direction 2G 60 minutes)	10 to 55Hz (X, Y, Z direction 1G 30 minutes)
EMI	Complies with FCC part 15 class A		
CE	Complies with EN61000-6-2, EN61000-6-4	Complies with EN55022, EN61000-4-2, EN61000-4-3, EN61000-4-8	
Front Panel	Meets NEMA4 / IP65		
Cooling	Natural cooling		
Dimensions (WxHxD) Unit : mm	188.0x143.3x 40.0	186.0x145.4x45.0	232.5x175.8x49.0
Cutout Dimensions (WxH) Unit : mm	174.5x132.5	174.5x132.5	221.5x164.0
Net Weight	0.59kg	0.65kg	0.54kg
Certifications	CE, FCC approved		

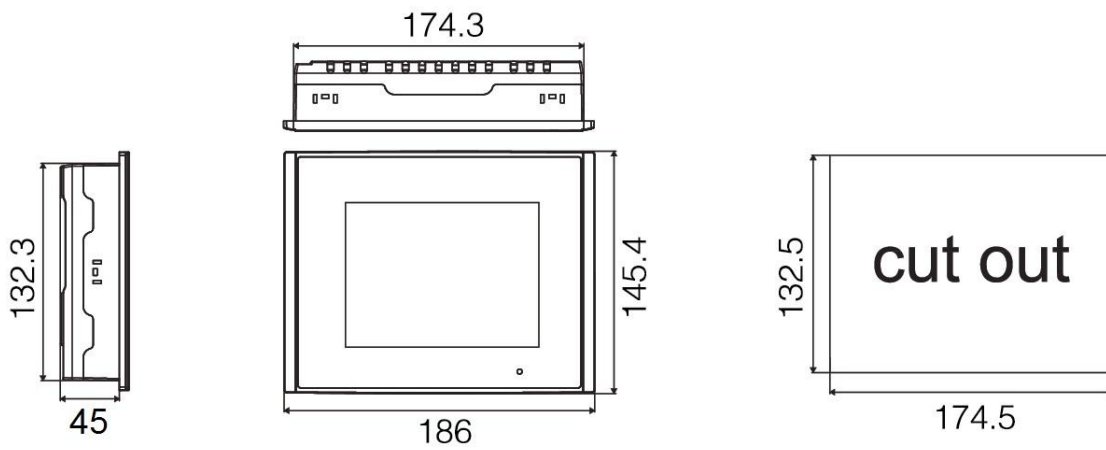
External Dimension

MT056-AST



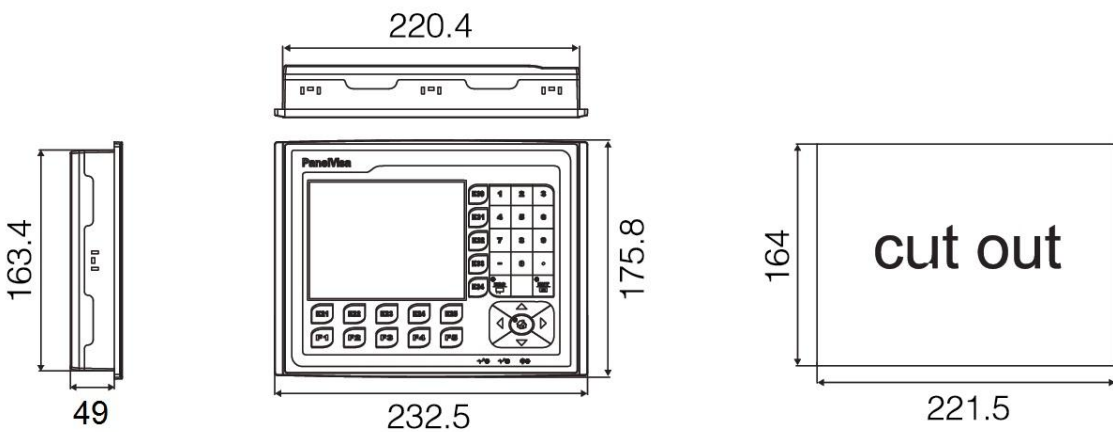
Unit: mm

MT057-BST / MT057-BNT / MT058-TST / MT058-TNT



Unit: mm

MT057-BSK / MT057-TSK



Unit: mm

Introduction of SCADA Software

The screenshot displays the Maxtech Designer software interface for SCADA development. The main window shows a control panel for 'CH 1' with a digital display showing '999.9 °C' and 'PV 999.9', and 'SV 999.9'. The interface includes several toolbars and panels:

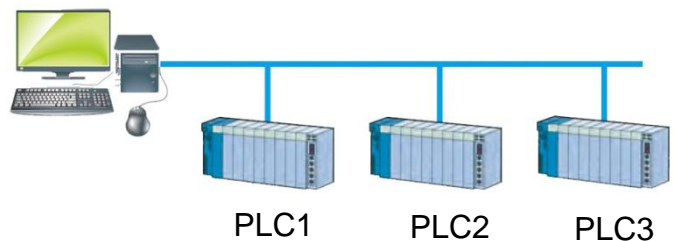
- Project Manager:** A tree view on the left showing the project structure, including 'Global', 'Languages', 'Font Templates', 'Picture Database', 'Sound Database', 'Text Database', 'Global Tags', 'Global Macros', 'Links', 'Internal Memory', 'MODBUS RS485', 'Tags', 'Sound Table', 'Setup', 'General Setup', 'Command & Status', 'Clock', 'Passwords', 'Schedule', 'Screens', 'Alarms', 'Digital Alarm (0)', 'Recipes', 'Parameter Recipe (0)', 'Data Loggers', and 'CH Data (0)'. The 'CH Data (0)' folder is selected.
- I/O List:** A table listing I/O addresses, purposes, and users.

Address	Purpose	Used by
\$U200.0	Write	Screens; <500>;
\$U0.0	Monitor	Screens; <500>;
1:WH8	Monitor	Screens; <500>;
1:WH8	Monitor	Screens; <500>;
1:WH8	Monitor	Screens; <500>;
2:WH8	Monitor	Screens; <500>;
2:WH8	Monitor	Screens; <500>;
2:WH8	Monitor	Screens; <500>;
2:WH8	Monitor	Screens; <500>;
1:WH8	Monitor	Screens; <631>;
1:WH8	Monitor	Screens; <631>;
1:WH8	Monitor	Screens; <631>;
1:WH8	Monitor	Screens; <631>;
1:WH0	Monitor	Screens; <700>;
\$U1401	Monitor	Screens; <700>;
\$U1401	Write	Screens; <700>;
\$U409	Monitor	Screens; <700>;
\$U409	Write	Screens; <700>;
\$U451	Write	Screens; <700>;
\$U451	Monitor	Screens; <700>;
\$U402	Monitor	Screens; <700>;
- Object Library:** A panel showing various graphical objects like 'Line Chart', 'Picture Display', 'GIF Display', 'Dynamic Circle', 'Dynamic Rectangle', 'Historic Data Table', 'Historic Event Table', 'Historic Trend Graph', and 'Alarm Display'.
- Object List:** A table listing objects and their properties.

Number	Object	ID	Write	Monitor
000	Text	T0000	N/A	N/A
001	Text	T0003	N/A	N/A
002	Word Button	WB0001	3:WH9	N/A
003	Word Button	WB0000	3:WH9	N/A
004	Numeric Entry	NE0000	3:WH12	3:WH12
005	Text	T0011	N/A	N/A
006	Advanced Numeric Disp	AND0000	N/A	3:WH2
007	Text	T0016	N/A	N/A
008	Star Graph	SG0000	N/A	3:WH2
009	Text	T0019	N/A	N/A
010	Time Display	TD0001	N/A	N/A
011	Numeric Entry	NE0001	3:WAS4	3:WAS4
012	Numeric Entry	NE0002	3:WASB	3:WASB
013	Advanced Numeric Disp	AND0001	N/A	3:WAS29
014	Advanced Numeric Disp	AND0002	N/A	3:WAS2
015	Advanced Numeric Disp	AND0003	N/A	1:WAS29
016	Text	T0008	N/A	N/A
017	Text	T0009	N/A	N/A
018	Text	T0012	N/A	N/A
019	Text	T0001	N/A	N/A
020	Screen Button	SB0001	N/A	N/A
021	Text	T0005	N/A	N/A
022	Screen Button	SB0000	N/A	N/A
023	Text	T0005	N/A	N/A
- Screen Overview:** A panel showing a grid of screens and users, including 'Operat ... (#205)', 'Operat ... (#206)', 'Operat ... (#207)', 'Operat ... (#208)', 'User ... (#304)', 'User ... (#305)', 'User ... (#306)', and 'User ... (#307)'. The screen dimensions are 376,601 x 10,410 x 80,60.

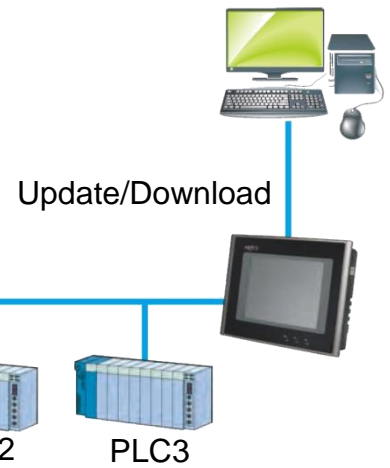
Maxtech SCADA directly executes in PC for monitoring

1. By USB key (to be charged), the users can directly run the program in PC, for what are edited by Maxtech SCADA.
2. Supporting access, My SQL, SQL
3. Unlimited I/O numbers.



Maxtech SCADA executes in HMI for monitoring

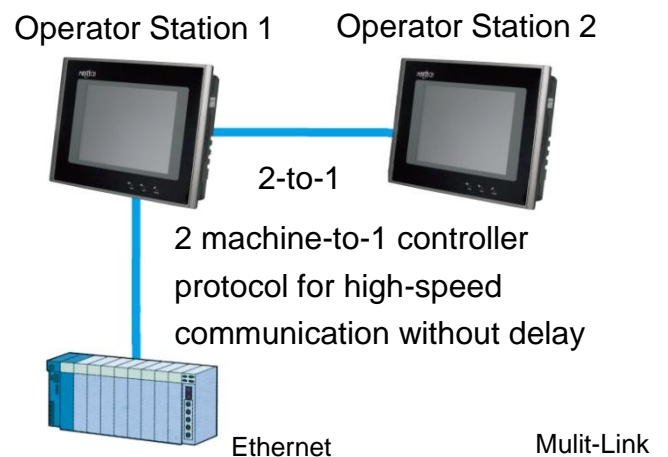
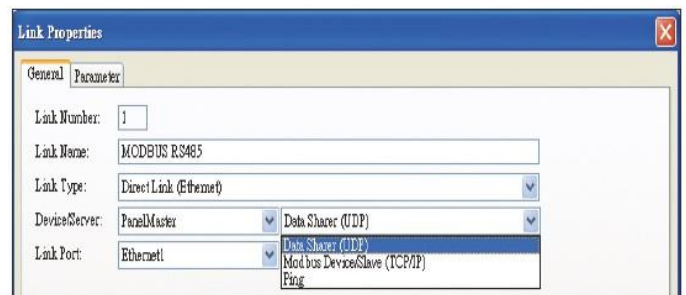
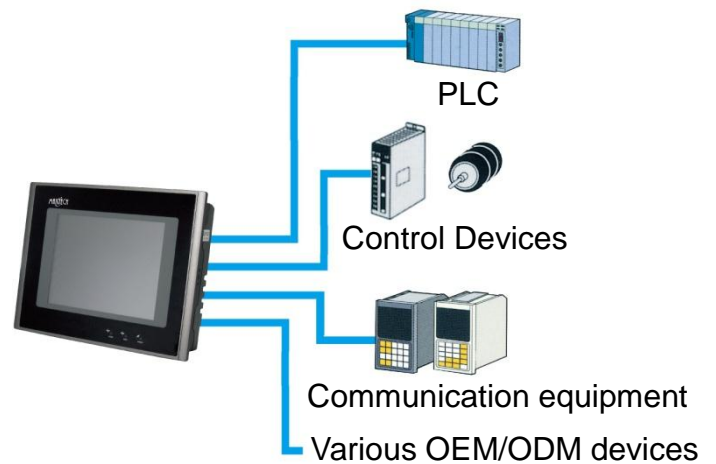
1. Maxtech SCADA software provides the strongest functions for programming engineers. (free of charge)
2. Software interface is available in traditional Chinese, Simply Chinese and English.
3. Free of charge for designing driver.



A variety of communication modes, offering customer freedom of choice, user-friendly products

Various forms of interface, serial communication RS232; RS422; RS485; Ethernet port, flexible with mixed connection mode, able to simultaneously conduct direct or indirect communication with multiple controllers.

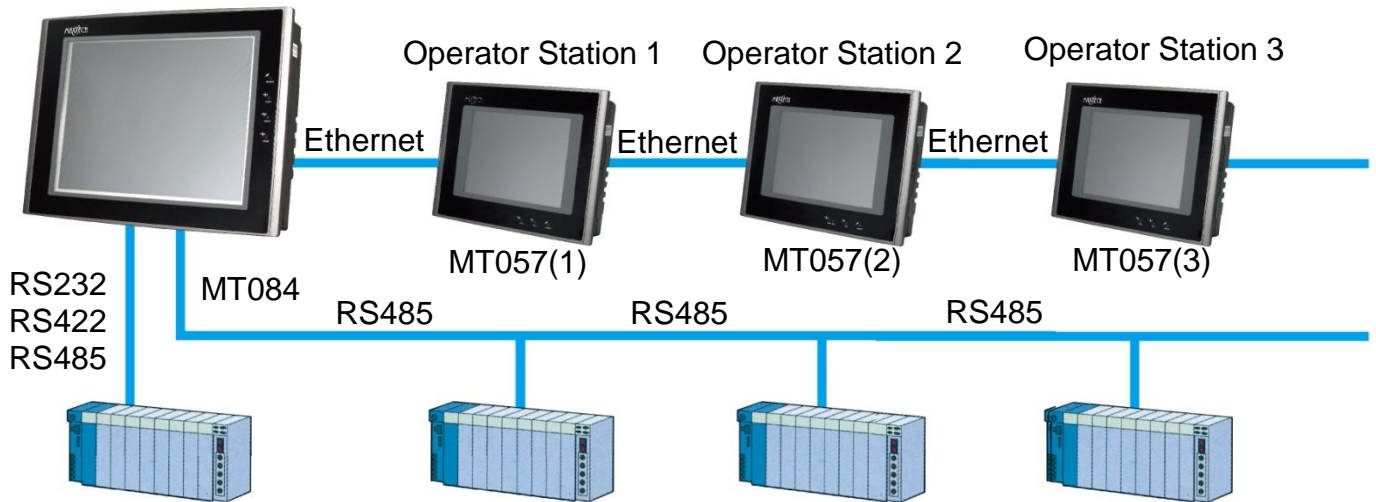
- (Serial 1:1), a human-machine with a controller or (serial 2:2) a human-machine with two different controllers in series
- (Serial port 1: n; Multi-drop) multiple human-machine (RS485) through a host human-machine with a master controller, for multiple-to-one communication.
- (Serial n: 1; Multi-link) multiple human-machine of a serial (RS485) with a controller.
- Specially developed two (human-machine) to one (controller) protocol, allowing faster communication; master and slave show different screens, can simultaneously switch and operate controller. Maxtech SCADA only needs simply setup for master and slave to share resources.
- (Ethernet port 1: n) human-machine of one network port (Ethernet) with multiple controllers.
- (Ethernet port 1:1) human-machine of one network port (Ethernet) with host PC, and a



controller in series; thus, host PC can conduct data sampling.

- Network port (Ethernet) data sharing mode
Data Sharer uses UDP protocol for connecting up to 16 MT product units for high-speed real-time data sharing.
- Through expansion module (Profibus DP bus, CANBus, etc.), connect to a variety of field bus network.

Primary operating station



Contact

Taipei World Trade Center

Add: 3C25, Taipei World Trade Center, No. 5, Sec. 5, Hsin Yi Rd. Taipei Taiwan, R.O.C.

Tel: 886-2-27206601 (Rep.)

Fax: 886-2-23455120

E-mail: gitta@ms9.hinet.net

<http://www.maxthermo.com>

Factory

Add: 11F., No.168, Jiankang Rd., Zhonghe Dist, New Taipei City 235, Taiwan (R.O.C.)

Tel: 886-2-22287950 (Rep.)

Fax: 886-2-22286140

Thailand Office - THAI MAXIMUM ELECTRONIC CO., LTD

Add: 86/132-133 m.7 Samaedum Bangkoontien Bangkok 10150 Thailand.

Tel: +662-415-8318 , +662-417-2548-49

Fax: +662-415-8798

<http://www.thaimaximum.com>