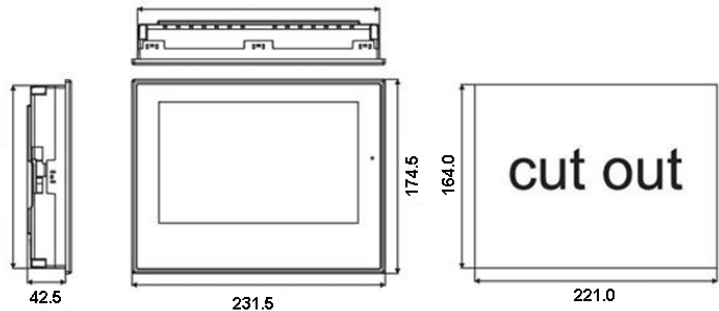
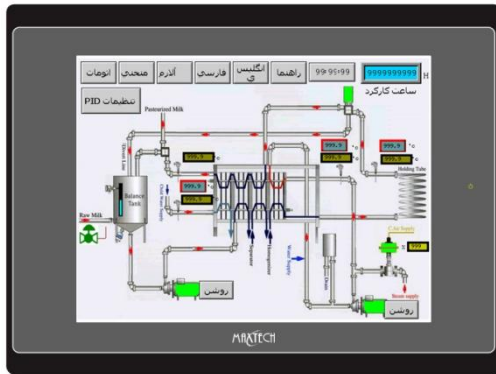


Human Machine Interface



Unit : mm

Standard Specification

| Display Information | | | | Touch screen | | | |
|--------------------------------|---|-----|-----|---------------------------|-------|-------------------------|--|
| Size | 8.0" | | | 4 wires analog resistive | | | |
| Sub-Model | 1 | 2 | 4 | CPU | | | |
| Max. Resolution | 800x600 | | | RISC 32 bits | | | |
| Type | TFT LCD | | | Flash Memory | | | |
| Max. Colors | 65,536 Colors | | | 8 MB NOR Flash | | | |
| Backlight Type | LED | | | Battery Backed Memory | | | |
| Backlight Life (hr) | 20000 Hrs | | | 128 KB (1024 KB optional) | | | |
| Luminance (cd/m ²) | 250 | | | Working Memory | | | |
| Communication Interface | | | | 64MB | | | |
| Micro-SD Slot | - | Yes | Yes | NAND Flash | | | |
| USB Client | Yes | | | - | 128MB | 128MB | |
| USB Host | Yes | | | Dimension WxHxD (mm) | | | |
| Serial | COM1: RS232/422/485 | | | 231.5x174.5x42.5 | | | |
| | COM2: A-RS422/485 | | | Cutout Dimension WxH (mm) | | | |
| | B-RS232/485 | | | 221.0x164.0 | | | |
| | C-RS232 with RTS&CTS | | | Net Weight (kg) | | | |
| | COM3: RS232 | | | 0.93 | | | |
| Ethernet | - | - | Yes | Power | | | |
| | | | | Supply Voltage | | 24VDC ±10% | |
| | | | | Consumption | | 20W | |
| Environment | | | | | | | |
| Operating Temperature | 0~50°C (32~120°F) | | | CE | | EN61000-6-2, N61000-6-4 | |
| Relative Humidity | 10~90% RH @ 0~50°C, non-condensing | | | Ingress Protection | | NEMA4, IP66 | |
| Shock (optional) | 10~55 Hz (X,Y, Z direction, 1G, 30 minutes) | | | Cooling | | Natural Cooling | |
| EMI | FCC Part 15 Class A | | | | | | |